

Smaug



	1	2	3	4	5
6	7	8	9	10	11
12	13	14	15	16	17
18	19	20	21	22	

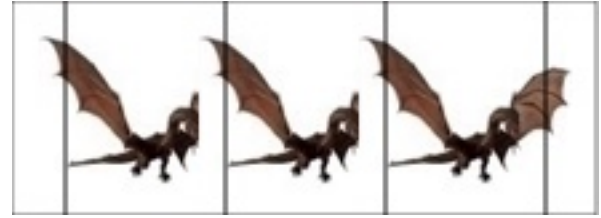
Fire Pillars



	1	
--	---	--



	1	
--	---	--



<p>Attack 9</p>  <p>Smaug</p> <p>MY BREATH IS DEATH</p> <p>Play when Smaug is attacking. Play face up when attacking and you may attack at range. Place up to 2 Fire Pillars in vacant spaces adjacent to the target character, restoring any Fire Pillars that were destroyed.</p>	<p>Attack 9</p>  <p>Smaug</p> <p>MY BREATH IS DEATH</p> <p>Play when Smaug is attacking. Play face up when attacking and you may attack at range. Place up to 2 Fire Pillars in vacant spaces adjacent to the target character, restoring any Fire Pillars that were destroyed.</p>	<p>Attack 9</p>  <p>Smaug</p> <p>MY BREATH IS DEATH</p> <p>Play when Smaug is attacking. Play face up when attacking and you may attack at range. Place up to 2 Fire Pillars in vacant spaces adjacent to the target character, restoring any Fire Pillars that were destroyed.</p>
<p>10 Defend</p>  <p>Smaug</p> <p>DRAGON SCALES</p> <p>Play when Smaug is defending. *If WEAK SPOT is in the discard pile and a Power Attack is played that would be enough to destroy Smaug, then the attack does full damage and Smaug is destroyed.</p>	<p>10 Defend</p>  <p>Smaug</p> <p>DRAGON SCALES</p> <p>Play when Smaug is defending. *If WEAK SPOT is in the discard pile and a Power Attack is played that would be enough to destroy Smaug, then the attack does full damage and Smaug is destroyed.</p>	<p>10 Defend</p>  <p>Smaug</p> <p>DRAGON SCALES</p> <p>Play when Smaug is defending. *If WEAK SPOT is in the discard pile and a Power Attack is played that would be enough to destroy Smaug, then the attack does full damage and Smaug is destroyed.</p>
<p>Attack 4*</p>  <p>Smaug</p> <p>MY TEETH ARE SWORDS</p> <p>Play when Smaug is attacking. *If this attack does damage, the attack value is 10.</p>	<p>SPECIAL</p>  <p>Smaug</p> <p>FIERY EXPLOSION</p> <p>Play anytime on your turn. Each Fire Pillar does 2 damage to all adjacent characters besides Smaug, the Balrog, and each other.</p>	<p>SPECIAL</p>  <p>Smaug</p> <p>FIERY EXPLOSION</p> <p>Play anytime on your turn. Each Fire Pillar does 2 damage to all adjacent characters besides Smaug, the Balrog, and each other.</p>

SPECIAL



Smaug

MY WINGS A HURRICANE

Play anytime on your turn.
Move Smaug to any open space.
Draw a card.

SPECIAL



Smaug

MY WINGS A HURRICANE

Play anytime on your turn.
Move Smaug to any open space.
Draw a card.

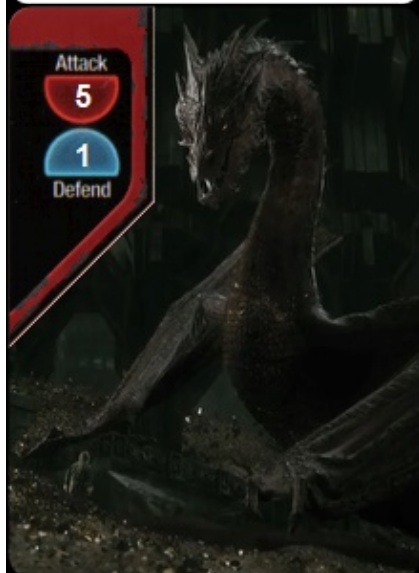
SPECIAL



Smaug

WEAK SPOT

Play immediately upon drawing.
Discard WEAK SPOT immediately after drawing it and draw another card, this does not count as an action. WEAK SPOT stays in your discard pile even if you reshuffle.



Attack **5**

Defend **1**



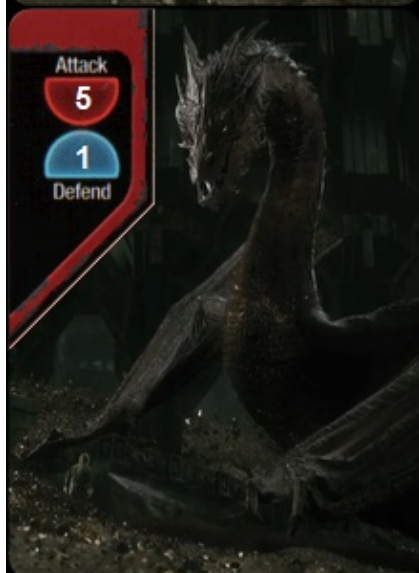
Attack **5**

Defend **1**



Attack **5**

Defend **1**



Attack **5**

Defend **1**



Attack **4**

Defend **1**



Attack **4**

Defend **2**





